

# Problem Solving Guide for ROTHENBERGER

## Quick-Fire & Super-Fire Piezo Ignition Soldering Torches

Under normal operating conditions your torch will give you many hours of trouble free use.

Upon receipt you will find that by following the step-by-step guide below, all of the parts are easy to fit and where possible for you to rectify the problem, any unnecessary delays incurred by returning your torch to our factory can be avoided.

### SAFETY NOTICE

**Always remove torch from gas cylinder and press button (G) to purge torch of any surplus gas before dismantling.**

#### SYMPTOM

1 Intermittent ignition or no ignition spark.

#### ACTION

**STEP 1** Remove burner tip, press button **G** to see if there is a spark if no spark is seen remove part **A** and check for spark, if there is a bright spark clean out Burn tube **A** to ensure there is no solder or flux causing an obstruction and put original burn tube back and see if the torch is now working correctly, if not, carry out step 2:

**STEP 2** replace burn tube **A** with the new unit in the kit and check to see if torch now sparks. If no spark can be seen, replace piezo unit **F**.

2 Piezo system difficult to engage or lock

Replace part **G/D/E/F**

3 Burn tube broken.

Replace part **A** and part **C** if Damaged

4 "O" ring seal damaged or perished

Replace part **J**

5 Cylinder seal perished or split

Replace part **H**

6 Ignition cup damaged or cracked

Replace parts **B & C**

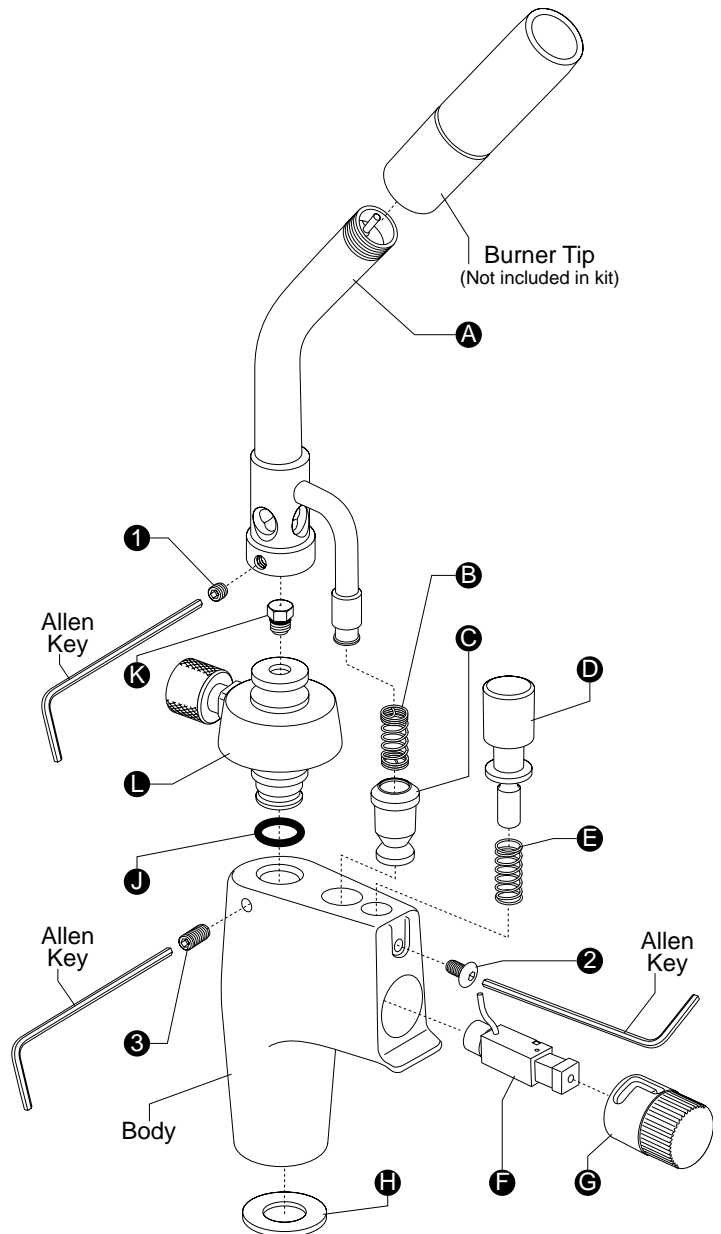
7 Weak Flame

Replace parts **K & L**

**Note:** Screws 1,2,3 and a 2mm allen key are provided in each repair kit

If your torch has any other symptom, or does not work correctly after taking the action described above, do not attempt any further repairs – Contact us immediately on:

**FREEPHONE 0800 626985** for further instructions.



### ROTHENBERGER (UK) Ltd

2 Kingsthorpe Park, Henson Way, Kettering, Northants NN16 8PX

Tel: 01536 310300 Fax: 01536 310600

Email: [info@rothenberger.co.uk](mailto:info@rothenberger.co.uk)

[www.rothenberger.com](http://www.rothenberger.com)